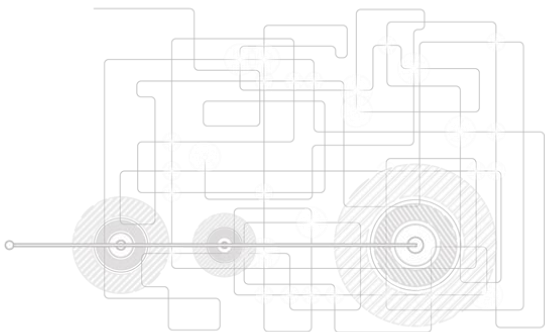


www.metro prepaid.co.uk



MET004
Single Phase Electronic
Energy Meter
User Manual



1. Product Appearance



Energy Meter

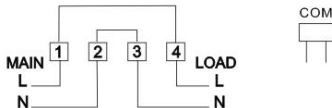


UIU

2. Technical Parameter

Item	Parameter
Wiring Mode	Single Phase Two-wire LNNL
Rated Current (Ib)	5A
Max. Current (Imax)	80A
Starting Current (0.4% Ib)	20mA
Rated Voltage (Un)	230V
Voltage Range	80% Un ~ 120%Un
Frequency (fn)	50Hz ± 5%
Accuracy Class	Active: IEC Class 1.0
Meter Constant	Active: 1000imp/kWh

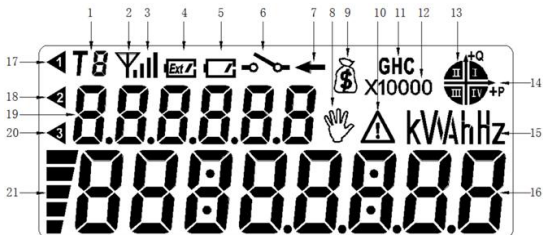
3. Wiring Diagram



4. LCD Display

4.1 LCD Display Introduction

Meter Full Display:

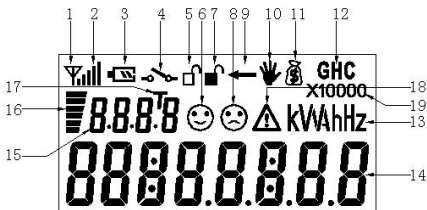


Symbol	Name	Function
1	Current tariff	Displays the current tariff
2、3	Reserved	
4	Battery tag	Indicate status of battery 1) Keep displaying, external battery voltage is low. 2) Disappear, external battery is normal.
5	Reserved	
6	Relay tag	Indicate the status of relay. The display is as follows: 1) Keep displaying, the relay is in disconnected status. 2) Disappear, the relay is in connected status. 3) Blink, the relay is in fault or in pre-connected status.
7	Current Reverse tag	Keep displaying, indicate reversal current
8	Tampering hand-shaped tag	Indicate if the meter is under tampering or not; the tampering event includes open meter cover and open terminal cover. The display is as follows: 1) Disappear, no tampering occurred. 2) Blink, detect tampering and confirm now.(Instantaneous state set) 3) Keep displaying, tampering event

		detected.(Confirmation state set)
9	Payment mode tag	When the meter is in the prepaid mode, the tag keeps displaying. When it in the prepaid mode, blink indicates a low credit alert.
10	Alert tag	This tag is used to indicate various alert status detected by the meter. Alert status includes two categories: 1) Meter faults: relay faults, clock faults, un-calibrated meters, metering errors 2) Alert events: over current, over voltage, under voltage, low power factor, current reverse. The display is as follows: 1) Disappear, no alert status has been detected. 2) Blink, alert event is detected. 3) Keep displaying, meter fault has been detected.
11	Reserved	
12	Reserved	
13、 14	Quadrant tag	Indicate the quadrant where the meter is operating: Note: When the meter is creeping, it only displays coordinate symbols, not quadrant symbols.
15	Unit tag	Indicates units of registers: 1) Power: kW, kVA, 2) Energy: kWh, kVAh, 3) Current: A 4) Voltage: V 5) Frequency: Hz
16	Main screen	Indicates electricity quantity, demand, time, voltage, current and meter ID number etc.
17	Operating mode tag	1) Disappear, The meter is in operating mode 2) Blink, The meter is in non- operating mode
18	Open meter cover tag	1) Disappear, meter cover has not been opened. 2) Blink, meter cover is open. 3) Keep displaying, meter cover has been turned on and will disappear after the tampering is cleared.
19	Sub-screen	Displays 3-digit short code
20	Open terminal cover tag	1) Disappear, terminal cover has not been opened. 2) Blink, terminal cover is open. 3) Keep displaying, terminal cover has been turned on and will disappear after the tampering

		is cleared.
21	Credit level tag	<p>Indicate the meter is in the pre-paid mode, the current remained credit line level is classified as follows:</p> <p>When the low credit line is not 0, the ratio of low credit will be used to classify the level. When $0 < \text{Remained credit} \leq \text{Low credit}$, it is classified as 1 level; when $\text{Low credit} < \text{Remained credit} \leq 2 \times \text{Low credit}$, it is classified as 2 level, and the subsequent level is analogized.</p>

UIU Full Display:



1	Reserved	2	Reserved	3	Battery tag
4	Relay tag	5	Reserved	6	Reserved
7	Reserved	8	Reserved	9	Reverse tag
10	Tampering tag	11	Prepayment mode tag	12	Reserved
13	Unit tag, such as voltage, current, electricity quantity, power, frequency	14	Display content	15	Display code

16	Remained credit bar	17	Current tariff	18	Alert tag
19	Reserved				

4.2. Display List

➤ Auto scroll display list for the meter

Short Code	Display Items
007	Remained credit

➤ Auto scroll display list for the UIU

Short Code	Display Items
007	Remained credit

➤ Power off display list

In prepaid mode:

Short Code	Display Items
007	Remained credit

In postpaid mode:


Short Code	Display Items
001	Total active energy (forward + reverse)

4.3 LED Indicator

LED	Description
Pulse LED	Pulse LED is red, and it blinks during power consumed
Alert LED	Alert LED is red, and it will blink when alert events occurred, and it keeps displaying when the relay is tripping.
Credit LED	Keep displaying in green when the credit is normal.
	The green light will blink when the energy is less than credit threshold.
	When the emergency mode hasn't been activated, the red light will blink when it is arrearage and the relay is opened.
	Under emergency mode (or under friendly period), the green and red lights will flash alternately during the consumption of power.
	Under emergency mode, the red light will keep displaying when it is arrearage and the relay is opened.

5. Power Purchase Process

5.1 Check Meter ID



Input "6"&"5" and then press " " via keypad, the meter will auto display 11-digit as the ID number in two screens.

Notice: The displayed No. shall be the same with the user ID (for purchasing power)

5.2 Purchase Power

- Visit the local power vending office to purchase power.
- Provide meter ID number to the operator.
- Inform the operator how much credit you want to buy and pay the bill.
- Obtain 20-digit TOKEN.

5.3 Recharge Meter

- Input the 20 digits of purchasing TOKEN via keypad.
- Confirm the entered TOKEN code on the display.
- If TOKEN is input wrongly, please delete by " " on keypad.
- After the input TOKEN is correct, press " " to confirm.
- If TOKEN is correct, "accept" shall be displayed on screen, and meter recharge is successful.
- If TOKEN is wrong, "reject" shall be displayed on screen, and recharge is failed.

6. LCD Data of Purchase Power

- If TOKEN is correct, "accept" will be displayed as follows:



- If TOKEN is wrong, "reject" will be displayed as follows:



- If TOKEN is expired, "old" will be displayed as follows:



- If TOKEN has been used, "used" will be displayed as follows:



7. Troubleshooting

Conditions	Solutions
When LCD displays some symbols occur lack of stroke, unclear or energy LED flashes, but LCD has no display.	When LCD displays abnormal, contact the manufacturer or local agent to change LCD.
LCD has no display and the pulse LED doesn't flash.	1.Check whether the wire is connect correctly or not; 2.Check whether voltage is within

LCD displays normal, but the energy pulse LED doesn't flash during power consumption.	operating range. 1. Check whether the wire connects correctly or not; 2. Power usage amount is less than 0.4%lb
---	---

8. Clean Meter

Use a soft cloth to clean meter until it is clean.

- Don't use sharp object to clean meter.
- Don't use wet cloth to clean meter.
- Don't use the liquid like alcohol to clean meter.