

CIU EV900

Customer Interface Unit

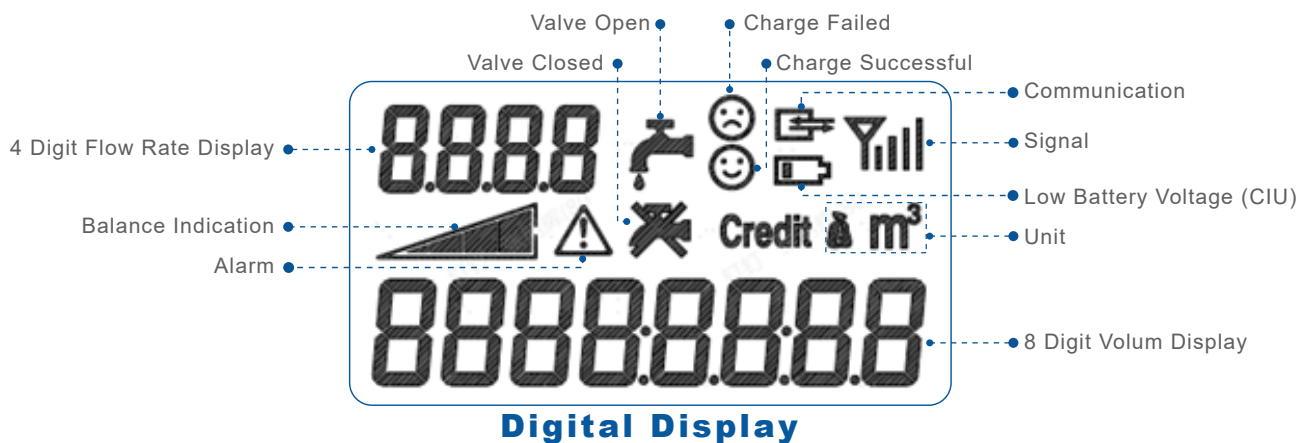
IU EV900 is a customer interface unit with keypad for credit charging.

It communicates with metering unit by RF for water consumption monitoring and credit charging.



Main Functions

- Balance display configurable
- Communication via RF
- Large digit LCD display, easy for reading
- 3×4 number and function keypad easy to operate
- Display readable without main power (RWP)
- Easy to match with meter, convenient for site installation
- Power supply options: Type C and battery
- LCD backlights to increase readability in low light conditions (optional)
- Balance display configurable
- Small size and Ergonomic design, convenient for hand hold



Product Parameter

Item	Technical Requirement
Power Supply	TPYE C/Battery
Working Voltage	5V 0.5A
Communication	RF(433MHz)
CIU Size (mm)	130(L)x67(W)x25 (H)
Material	Plastic
LED Display Size (mm)	50(L)×25(W)
Storage Temperature	-10°C to 70°C
Working Temperature	0°C to 45°C

Short Code

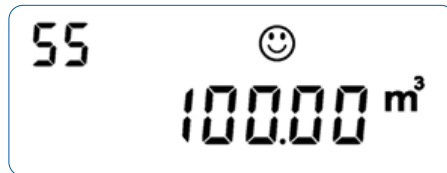
By entering 3 digit codes the user can access information present in the meter. The table below displays the codes and related description.

Short Code	600	601	604	606	611	612	614	650	655	656
Description	Consumption	Credit Balance	Meter Number	Reason for Valve	Emergency Credit	Cancel Audible Alarm	Total Purchased Amount	Meter Battery Voltage	Open Valve	Close Valve

Charge Meter

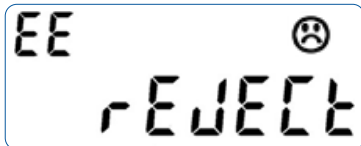
- User finds the credit balance indicator alarms with low balance credit;
- User goes to POS (point of sale) to buy a voucher;
- The voucher contains a 20-digit TOKEN. For example: "6418 8786 2991 6780 9510". Enter the token via keypad;
- On successful entry of the TOKEN, the LCD display will immediately display the water amount.

An "SS" shown in the top left hand corner, indicates successful entry.



If the TOKEN is not correctly entered, the reject reason will be shown on the display.

Reason Cause Rejection



The 20-digits TOKEN is not entered correctly.



The token has been used to credit meter before.



The token has been expired.

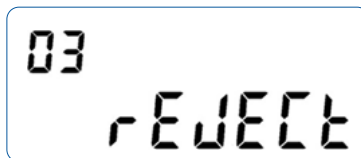
Urgent Credit

When the balance of the water meter is used up, the valve is automatically closed to stop the water supply. Use the shortcut key "611" to realize urgent credit and restore water supply.

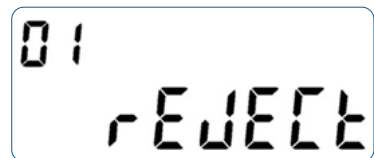
The following is the display situation after urgent credit:



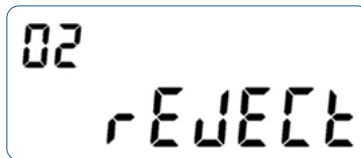
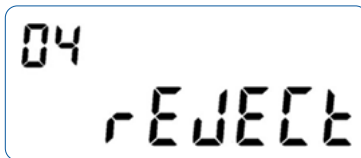
Already used the urgent credit function



Logged out, no urgent credit



No need to use the urgent credit function, the balance is above 0



Balance Indicator

- The water meter has sufficient balance and the green light is on ●
- When the water meter balance is less than the alarm value 1, the red light is on ●
- When the water meter balance is less than the alarm value 2, the red light flashes ●○○○

- Note:**
- Supports up to 20 queries a day, after the first time exceeds 10 times, it will be locked for 2h; after it exceeds 10 times again, it will be locked until 0:00 the next day.
 - The Token is limited to 10 times a day, if exceeded , must wait until another day.